

КАТАЛОГ

электрогидравлические компоненты ATOS



Алматы (7273)495-231
Ангарск (3955)60-70-56
Архангельск (8182)63-90-72
Астрахань (8512)99-46-04
Барнаул (3852)73-04-60
Белгород (4722)40-23-64
Благовещенск (4162)22-76-07
Брянск (4832)59-03-52
Владивосток (423)249-28-31
Владикавказ (8672)28-90-48
Владимир (4922)49-43-18
Волгоград (844)278-03-48
Вологда (8172)26-41-59
Воронеж (473)204-51-73
Екатеринбург (343)384-55-89

Иваново (4932)77-34-06
Ижевск (3412)26-03-58
Иркутск (395)279-98-46
Казань (843)206-01-48
Калининград (4012)72-03-81
Калуга (4842)92-23-67
Кемерово (3842)65-04-62
Киров (8332)68-02-04
Коломна (4966)23-41-49
Кострома (4942)77-07-48
Краснодар (861)203-40-90
Красноярск (391)204-63-61
Курск (4712)77-13-04
Курган (3522)50-90-47
Липецк (4742)52-20-81

Магнитогорск (3519)55-03-13
Москва (495)268-04-70
Мурманск (8152)59-64-93
Набережные Челны (8552)20-53-41
Нижний Новгород (831)429-08-12
Новокузнецк (3843)20-46-81
Ноябрьск (3496)41-32-12
Новосибирск (383)227-86-73
Омск (3812)21-46-40
Орел (4862)44-53-42
Оренбург (3532)37-68-04
Пенза (8412)22-31-16
Петрозаводск (8142)55-98-37
Псков (8112)59-10-37
Пермь (342)205-81-47

Ростов-на-Дону (863)308-18-15
Рязань (4912)46-61-64
Самара (846)206-03-16
Самара (846)206-03-16
Саранск (8342)22-96-24
Санкт-Петербург (812)309-46-40
Саратов (845)249-38-78
Севастополь (8692)22-31-93
Симферополь (3652)67-13-56
Смоленск (4812)29-41-54
Сочи (862)225-72-31
Ставрополь (8652)20-65-13
Сыктывкар (8212)25-95-17
Тамбов (4752)50-40-97
Тамбов (4752)50-40-97
Сургут (3462)77-98-35
Тверь (4822)63-31-35

Тольятти (8482)63-91-07
Томск (3822)98-41-53
Тула (4872)74-02-29
Тюмень (3452)66-21-18
Ульяновск (8422)24-23-59
Улан-Удэ (3012)59-97-51
Уфа (347)229-48-12
Хабаровск (4212)92-98-04
Чебоксары (8352)28-53-07
Челябинск (351)202-03-61
Череповец (8202)49-02-64
Чита (3022)38-34-83
Якутск (4112)23-90-97
Ярославль (4852)69-52-93

Россия (495)268-04-70

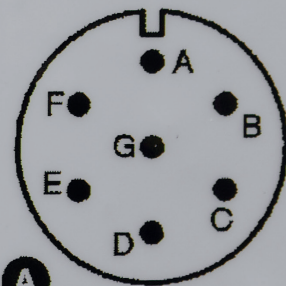
Казахстан (772)734-952-31

Киргизия (996)312-96-26-47

atos® 

E-RI-TEB-N-NP-01H

DLHZO-TEB-SN-NP-040-L01 1



A: MAIN
A: V+ ext.
B: V0
C: AGND
D: Q_INPU

A

T-966

THE ATOS RANGE

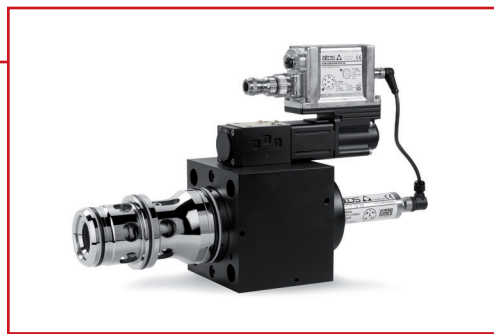
PRODUCT LINES

The Atos range is represented by 3 product lines and 7 categories to provide easy access to the wide and ever-evolving product portfolio



INDUSTRIAL

High performance hydraulics meet advanced digital technology



SECTORS:

- Manufacturing
- Defense
- Wind
- Construction
- Agriculture
- Transportation



EX-PROOF

Engineered for safe operation in hazardous environments



SECTORS:

- Oil & gas
- Mining
- Energy



STAINLESS STEEL

The highest resistance to corrosive environments and fluids

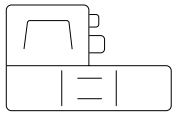


SECTORS:

- Marine
- Chemical
- Food

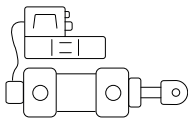
THE ATOS RANGE

PRODUCT CATEGORIES



PROPORTIONAL VALVES

A unique range, from simple valves without transducers to servoproportionals



AXIS & P/Q CONTROLS

Servosystems with digital axis cards for position, speed and force control of any hydraulic actuator



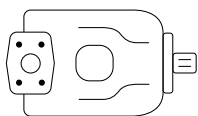
ON-OFF VALVES

A full range of reliable components to satisfy the most demanding applications



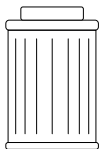
CYLINDERS

ISO executions with rugged design, engineered for high speeds, low friction and extended operative life



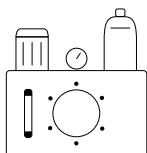
PUMPS

Fixed or variable displacement, for high pressure applications with low noise and long service life



FILTERS

Equipped with high efficiency microfiber elements for optimal fluid cleanliness

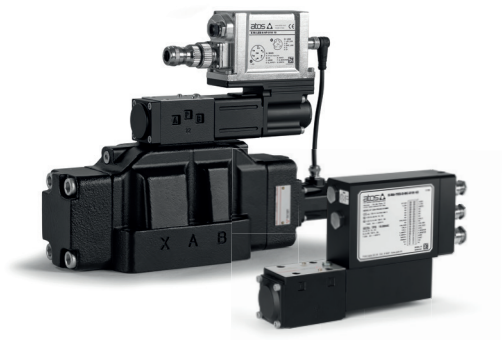


SYSTEMS

Power units and hydraulic blocks tailored for any hydraulic application, environment and working condition



PROPORTIONAL VALVES



SERVOPROPORTIONAL DIRECTIONALS

For high precision motion controls.
Zero overlap executions with LVDT transducers

- 4/4, 4/3 way • ISO sizes 06 ÷ 35
- Qmax 3.500 l/min • Pmax 350 bar

HIGH PERFORMANCE DIRECTIONALS

Positive overlap executions with LVDT transducers
for high dynamic directional and speed controls

- 4/3, 4/2 way • ISO sizes 06 ÷ 35
- Qmax 3.500 l/min • Pmax 350 bar



SERVOCARTRIDGES

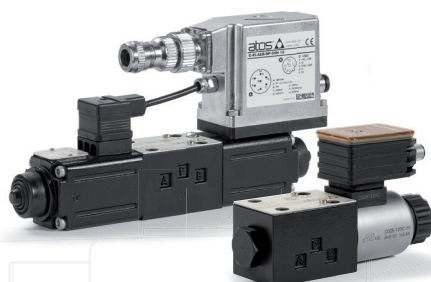
High flow for highest dynamic control.
With 2 LVDT transducers

- 3 way • sizes 25 ÷ 80
- Qmax 5.000 l/min • Pmax 420 bar

HIGH PERFORMANCE CARTRIDGES

High flow speed controls with ultra-fast
response time. With 2 LVDT transducers

- 2 way • ISO sizes 16 ÷ 125
- Qmax 22.000 l/min • Pmax 420 bar



DIRECTIONALS

Full range of proportionals without LVDT transducers

- 4/3, 4/2 way • ISO sizes 06 ÷ 32
- Qmax 1.500 l/min • Pmax 350 bar

FLOW CONTROLS

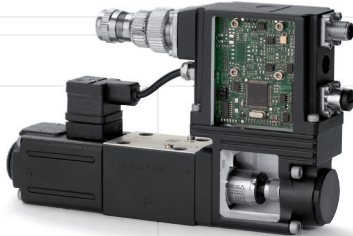
Pressure compensated speed controls.
With or without LVDT transducers

- 2, 3 way • ISO sizes 06 ÷ 10
- Qmax 90 l/min • Pmax 210 bar

atos



PROPORTIONAL VALVES



HIGH PERFORMANCE PRESSURE RELIEF

With pressure transducer for best accuracy and repeatability

- 2 way • ISO sizes 06 ÷ 32
- Qmax 600 l/min • Pmax 350 bar

HIGH PERFORMANCE PRESSURE REDUCING

With pressure transducer for best accuracy and repeatability

- 2, 3 way • ISO sizes 06 ÷ 20
- Qmax 300 l/min • Pmax 350 bar



PRESSURE RELIEF

Without pressure transducer

- 2 way • ISO sizes 06 ÷ 32
- Qmax 600 l/min • Pmax 350 bar

PRESSURE REDUCING

Without pressure transducer

- 2, 3 way • ISO sizes 06 ÷ 20
- Qmax 300 l/min • Pmax 350 bar



PRESSURE RELIEF CARTRIDGES

High flow with compact block design.

With or without pressure transducer

- 2 way • ISO sizes 16 ÷ 80
- Qmax 4.500 l/min • Pmax 350 bar

PRESSURE REDUCING CARTRIDGES

High flow with compact block design.

With or without pressure transducer

- 2 way • ISO sizes 16 ÷ 40
- Qmax 800 l/min • Pmax 350 bar

PROPORTIONAL VALVES



**SAFETY
CERTIFIED**



SAFETY PROPORTIONALS

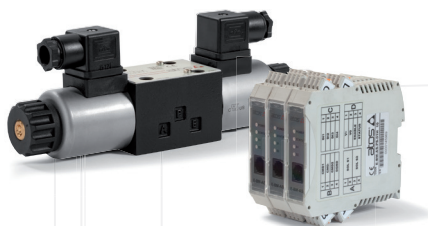
Directional valves integrating safety functions.
IEC 61508 & ISO 13849 certified

- 4/4, 4/3, 4/2 way
- ISO sizes 06 ÷ 35
- Qmax 3.500 l/min
- Pmax 350 bar



EMERGENCY HAND LEVERS

Auxiliary manual override to operate
the valve in case of emergency



DIN-RAIL ELECTRONIC DRIVERS

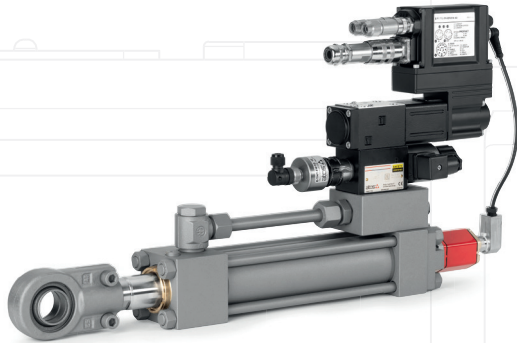
For directional, flow and pressure valves.
Off-board executions suitable for electrical cabinet
installation in case of aggressive environments,
excessive temperatures and vibrations



atos



AXIS & P/Q CONTROLS



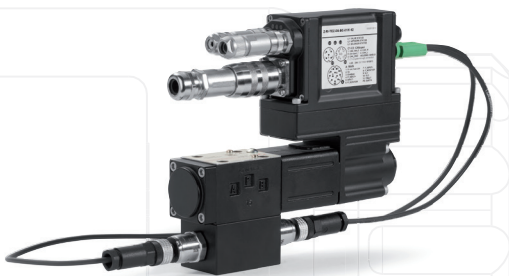
AXIS CONTROLS

Servoproportional directional valves with on-board digital axis card

- 4/4, 4/3 way • ISO sizes 06 ÷ 35
- Qmax 3.500 l/min • Pmax 350 bar

SERVOACTUATORS

Smart and compact units that integrate servocylinder and axis control valve to fully manage the motion cycle



P/Q CONTROLS

Force or pressure controls for servoproportional and high performance directionals

- 4/4, 4/3 way • ISO sizes 06 ÷ 35
- Qmax 3.500 l/min • Pmax 350 bar
- 3 way • sizes 25 ÷ 80
- Qmax 5.000 l/min • Pmax 420 bar



P/Q AXIAL PISTON PUMPS

High dynamics & accurate P/Q electronic control with power limiting

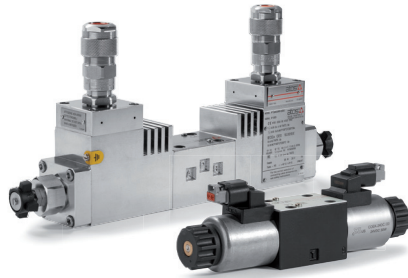
- Pumps displacement 29 ÷ 140 cm³/rev
- Pmax 350 bar



DIN-RAIL AXIS CARDS

Off-board executions suitable for electrical cabinet installation. With or without valve drivers and P/Q control

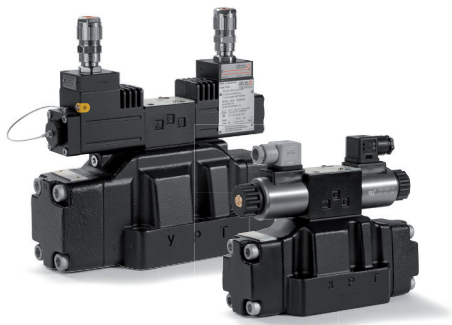
ON-OFF VALVES



DIRECT SOLENOID DIRECTIONALS

DIN, AMP, Deutsch or lead wire connections.
Low leakage and/or low power 8/15 W executions

- 4/3, 4/2, 3/2 way • ISO sizes 06 ÷ 10
- Qmax 150 l/min • Pmax 350/420 bar



PILOTED SOLENOID DIRECTIONALS

DIN, AMP, Deutsch or lead wire connections

- 4/3, 4/2, 3/2 way • ISO sizes 10 ÷ 32
- Qmax 1.000 l/min • Pmax 350 bar



LEAK FREE

Directional solenoid valves with zero leakage

- 2, 3 way • sizes up to 1"5/16
- Qmax 300 l/min • Pmax 350 bar



MECHANICAL, HYDRAULIC, PNEUMATIC

Mechanical, hydraulic or pneumatic operated

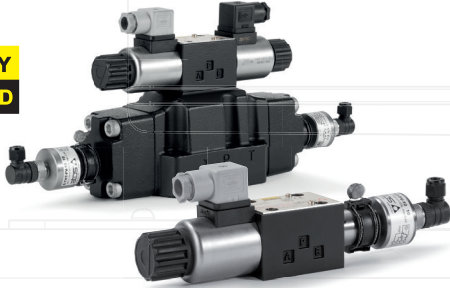
- 4/3, 4/2, 3/2 way • ISO sizes 06 ÷ 32
- Qmax 1.000 l/min • Pmax 350 bar

ato

ON-OFF VALVES



**SAFETY
CERTIFIED**



SAFETY DIRECTIONALS

With inductive sensors to monitor the spool position in compliance with Machine Directive 2006/42/EC

- 4/3, 4/2, 3/2 way • ISO sizes 06 ÷ 25
- Qmax 700 l/min • Pmax 350 bar

PRESSURE RELIEF

Subplate, screw-in and in-line executions

- 2 way • sizes up to ISO 32
- Qmax 600 l/min • Pmax 350 bar

PRESSURE REDUCING

- 2 way • ISO sizes 06 ÷ 32
- Qmax 400 l/min • Pmax 350 bar

SEQUENCE & UNLOADING

- 2 way • ISO sizes 06 ÷ 32
- Qmax 600 l/min • Pmax 350 bar

PRESSURE EQUIPMENT DIRECTIVE

Pressure relief valves PED certified. Subplate, screw-in and in-line executions

- 2 way • sizes up to ISO 32
- Qmax 600 l/min • Pmax 420 bar

**SAFETY
CERTIFIED**



INTRINSICALLY SAFE

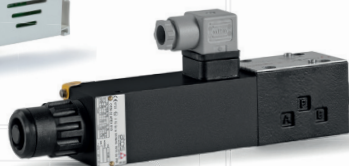
The electronic barrier limits the power to 2 W

Directional solenoid valves

- 4/3, 4/2, 3/2 way • ISO sizes 06 ÷ 25
- Qmax 700 l/min • Pmax 350 bar

Leak free solenoid valves

- 2, 3 way • ISO size 06
- Qmax 12 l/min • Pmax 350 bar



ON-OFF VALVES



HIGH FLOW CARTRIDGES

Directional, pressure, flow & check controls

- 2 way • ISO sizes 16 ÷ 100
- Qmax 9.000 l/min • Pmax 420 bar



SAFETY CARTRIDGES

With functional covers integrating inductive sensor to monitor poppet position

- 2 way • ISO sizes 16 ÷ 100
- Qmax 7.500 l/min • Pmax 420 bar

CHECK

Screw-in, subplate, in-line executions

- 2 way • sizes up to ISO 32
- Qmax 500 l/min • Pmax 350 bar



FLOW

Pressure compensated valves

- 2 way • ISO size 06
- Qmax 24 l/min • Pmax 250 bar

Throttle valves

- 2 way • sizes G 3/8 ÷ G 1 1/4
- Qmax 250 l/min • Pmax 400 bar

PRESSURE SWITCHES

Mechanical or electronic



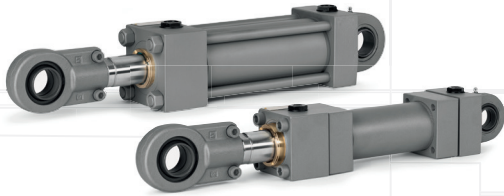
MODULARS

Directional, flow, check, pressure relief, reducing, compensator and sequence controls

- 4/3, 4/2, 3/2 way • ISO sizes 06 ÷ 25
- Qmax 300 l/min • Pmax 350 bar

atos 

CYLINDERS



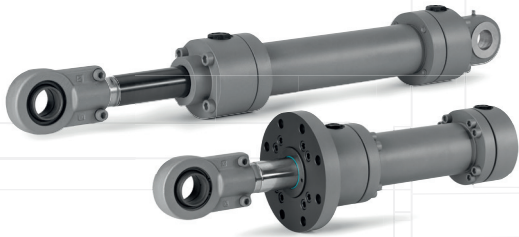
SQUARE HEADS

With tie-rods

- ISO 6020-2 • bore \varnothing 25 ÷ 200 mm
- Max speed 4 m/s • Pmax 250 bar

With counterflanges

- ISO 6020-2/3 • bore \varnothing 63 ÷ 400 mm
- Max speed 4 m/s • Pmax 250 bar



ROUND HEADS

With counterflanges

- ISO 6020-1 • bore \varnothing 40 ÷ 200 mm
- Max speed 4 m/s • Pmax 250 bar

With counterflanges

- ISO 6022 • bore \varnothing 50 ÷ 320 mm
- Max speed 4 m/s • Pmax 320 bar



SERVOCYLINDERS

Low friction with built-in position transducers.
Safety executions integrate IEC 61508 certified transducers and/or rod locking systems



SPECIAL CYLINDERS

For demanding applications and harsh environments.
On request: ceramic rod treatments, Geomet coatings or stainless steel executions

PUMPS



VANES

- Fixed displacements 10 ÷ 150 cm³/rev
- Pmax 210/300 bar

RADIAL PISTONS

- Fixed displacements 2 ÷ 25 cm³/rev
- Pmax 350/500 bar



AXIAL PISTONS

Pressure, flow, load sensing,
constant power or P/Q controls

- Variable displacements 29 ÷ 140 cm³/rev
- Pmax 350 bar

MULTIPLE

Modular assembly with fixed or variable
displacement pumps for flexible
hydraulic power management

FILTERS



IN LINE

- Filtration ratings F03 ÷ F10
- Qmax 340 l/min • Pmax 420 bar

RETURN LINE

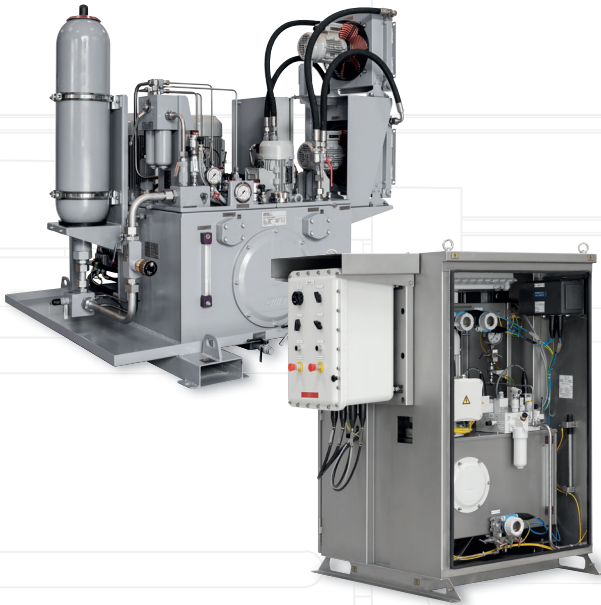
- Filtration ratings F10 ÷ F25
- Qmax 550 l/min • Pmax 10 bar

SUCTION

- Filtration ratings W125
- Qmax 450 l/min

atos 

SYSTEMS



POWER UNITS

For industry, Oil&Gas, energy and marine sectors.
Engineered for 24/7 operation, remote control
and energy saving

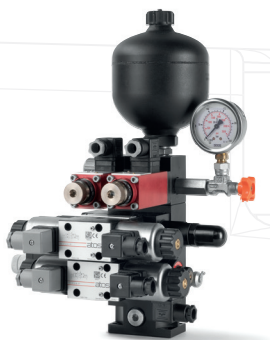
Certified according to PED or Machine Directive,
conform to CE regulations

Stainless steel executions for operations in aggressive
environments or with water-based fluids.
Certified by ABS, BV, DNV GL, RMRS,
RINA, CCS, DEKRA, TÜV



BLOCKS

Standard or special executions
with CE, PED or safety certifications.
Cast iron, stainless steel,
carbon steel or aluminium alloy



MODULAR GROUPS

Modular compositions obtained
by assembling ISO standard
components





Алматы (7273)495-231
Ангарск (3955)60-70-56
Архангельск (8182)63-90-72
Астрахань (8512)99-46-04
Барнаул (3852)73-04-60
Белгород (4722)40-23-64
Благовещенск (4162)22-76-07
Брянск (4832)59-03-52
Владивосток (423)249-28-31
Владикавказ (8672)28-90-48
Владимир (4922)49-43-18
Волгоград (844)278-03-48
Вологда (8172)26-41-59
Воронеж (473)204-51-73
Екатеринбург (343)384-55-89

Иваново (4932)77-34-06
Ижевск (3412)26-03-58
Иркутск (395)279-98-46
Казань (843)206-01-48
Калининград (4012)72-03-81
Калуга (4842)92-23-67
Кемерово (3842)65-04-62
Киров (8332)68-02-04
Коломна (4966)23-41-49
Кострома (4942)77-07-48
Краснодар (861)203-40-90
Красноярск (391)204-63-61
Курск (4712)77-13-04
Курган (3522)50-90-47
Липецк (4742)52-20-81

Магнитогорск (3519)55-03-13
Москва (495)268-04-70
Мурманск (8152)59-64-93
Набережные Челны (8552)20-53-41
Нижний Новгород (831)429-08-12
Новокузнецк (3843)20-46-81
Ноябрьск (3496)41-32-12
Новосибирск (383)227-86-73
Омск (3812)21-46-40
Орел (4862)44-53-42
Оренбург (3532)37-68-04
Пенза (8412)22-31-16
Петрозаводск (8142)55-98-37
Псков (8112)59-10-37
Пермь (342)205-81-47

Ростов-на-Дону (863)308-18-15
Рязань (4912)46-61-64
Самара (846)206-03-16
Самара (846)206-03-16
Саранск (8342)22-96-24
Санкт-Петербург (812)309-46-40
Саратов (845)249-38-78
Севастополь (8692)22-31-93
Симферополь (3652)67-13-56
Ставрополь (8652)20-65-13
Сочи (862)225-72-31
Смоленск (4812)29-41-54
Сочи (862)225-72-31
Саратов (845)249-38-78
Сыктывкар (8212)25-95-17
Тамбов (4752)50-40-97
Тамбов (4752)50-40-97
Сургут (3462)77-98-35
Тверь (4822)63-31-35

Тольятти (8482)63-91-07
Томск (3822)98-41-53
Тула (4872)74-02-29
Тюмень (3452)66-21-18
Ульяновск (8422)24-23-59
Улан-Удэ (3012)59-97-51
Уфа (347)229-48-12
Хабаровск (4212)92-98-04
Чебоксары (8352)28-53-07
Челябинск (351)202-03-61
Череповец (8202)49-02-64
Чита (3022)38-34-83
Якутск (4112)23-90-97
Ярославль (4852)69-52-93

Россия (495)268-04-70

Казахстан (772)734-952-31

Киргизия (996)312-96-26-47